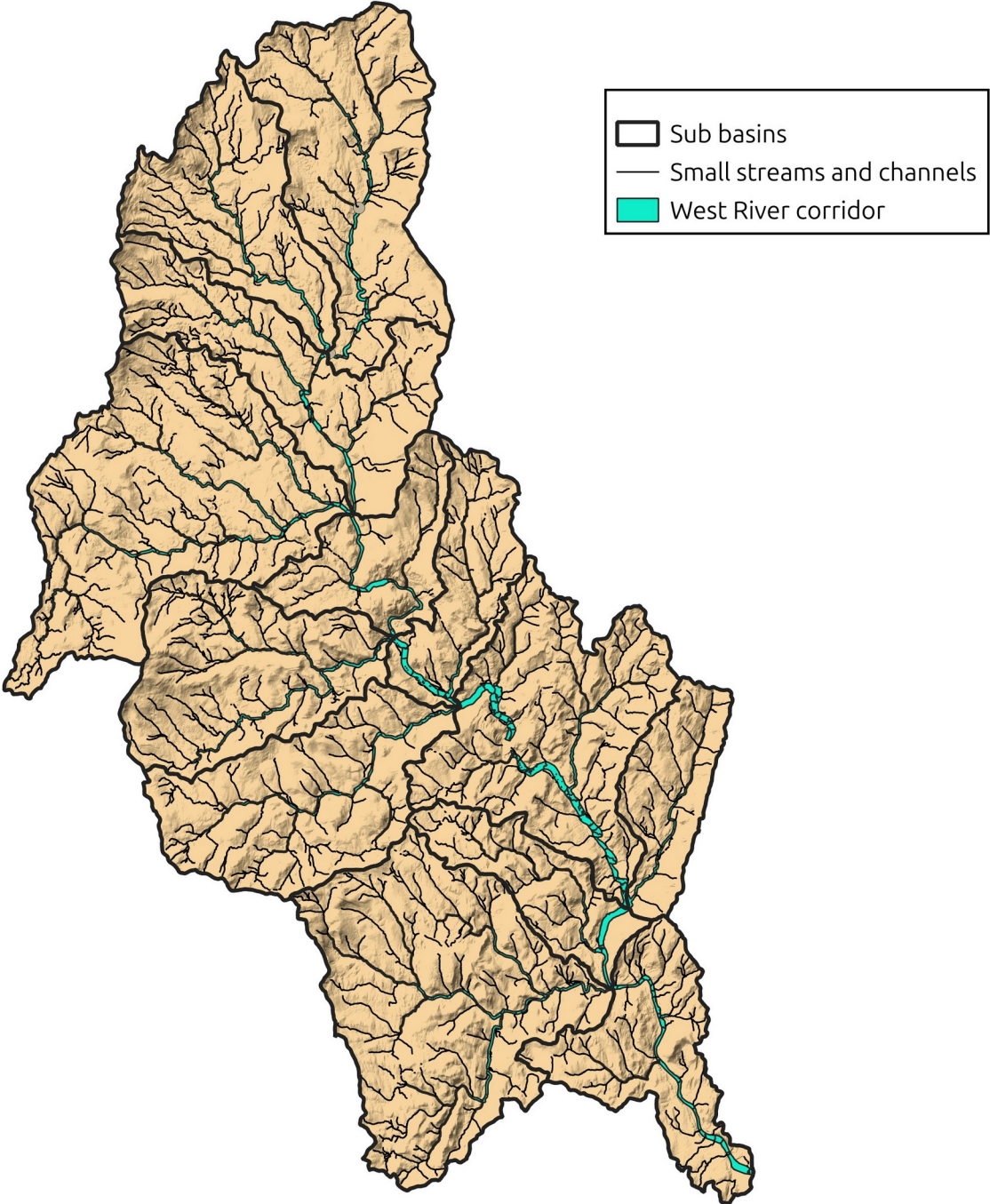
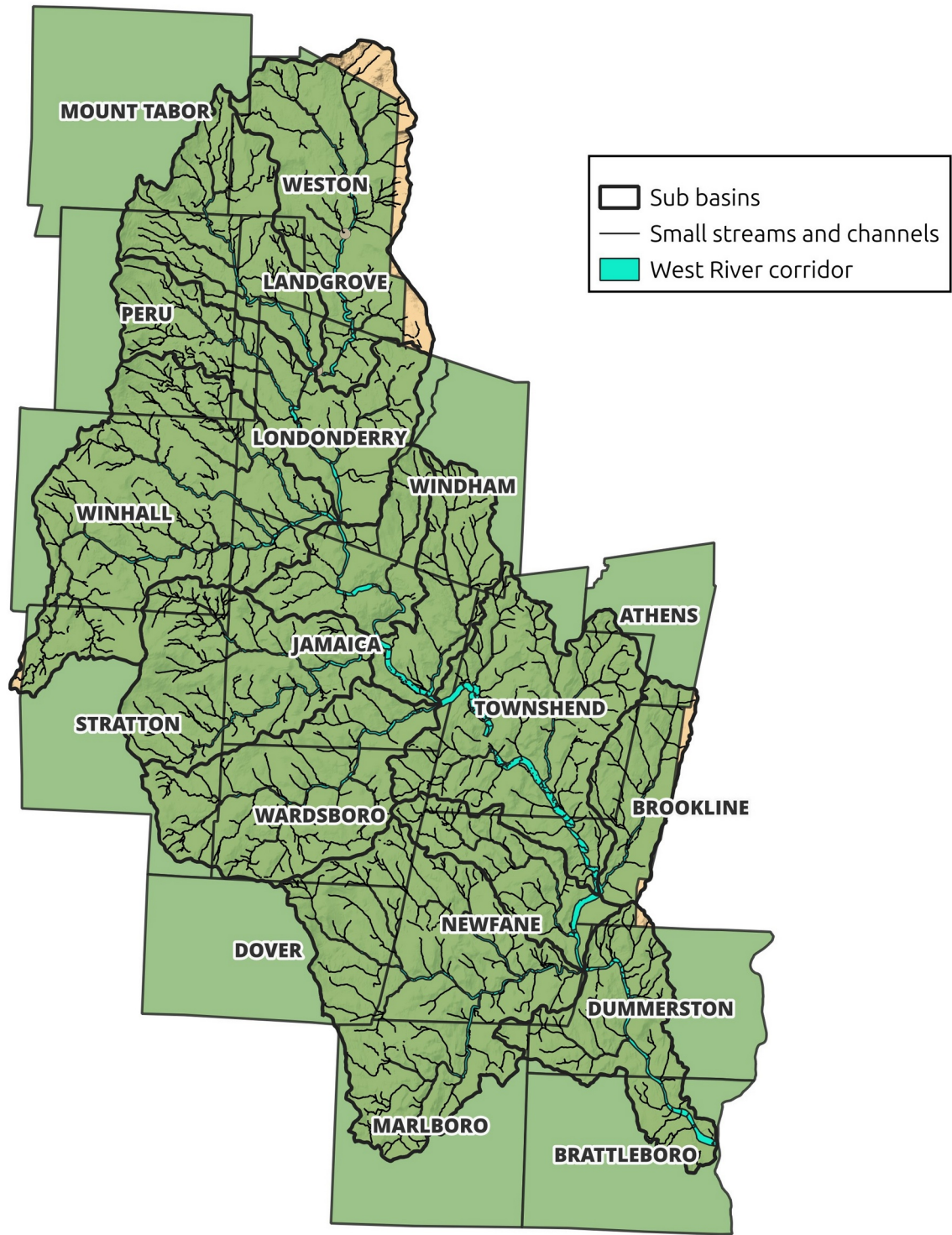


# West River Basin



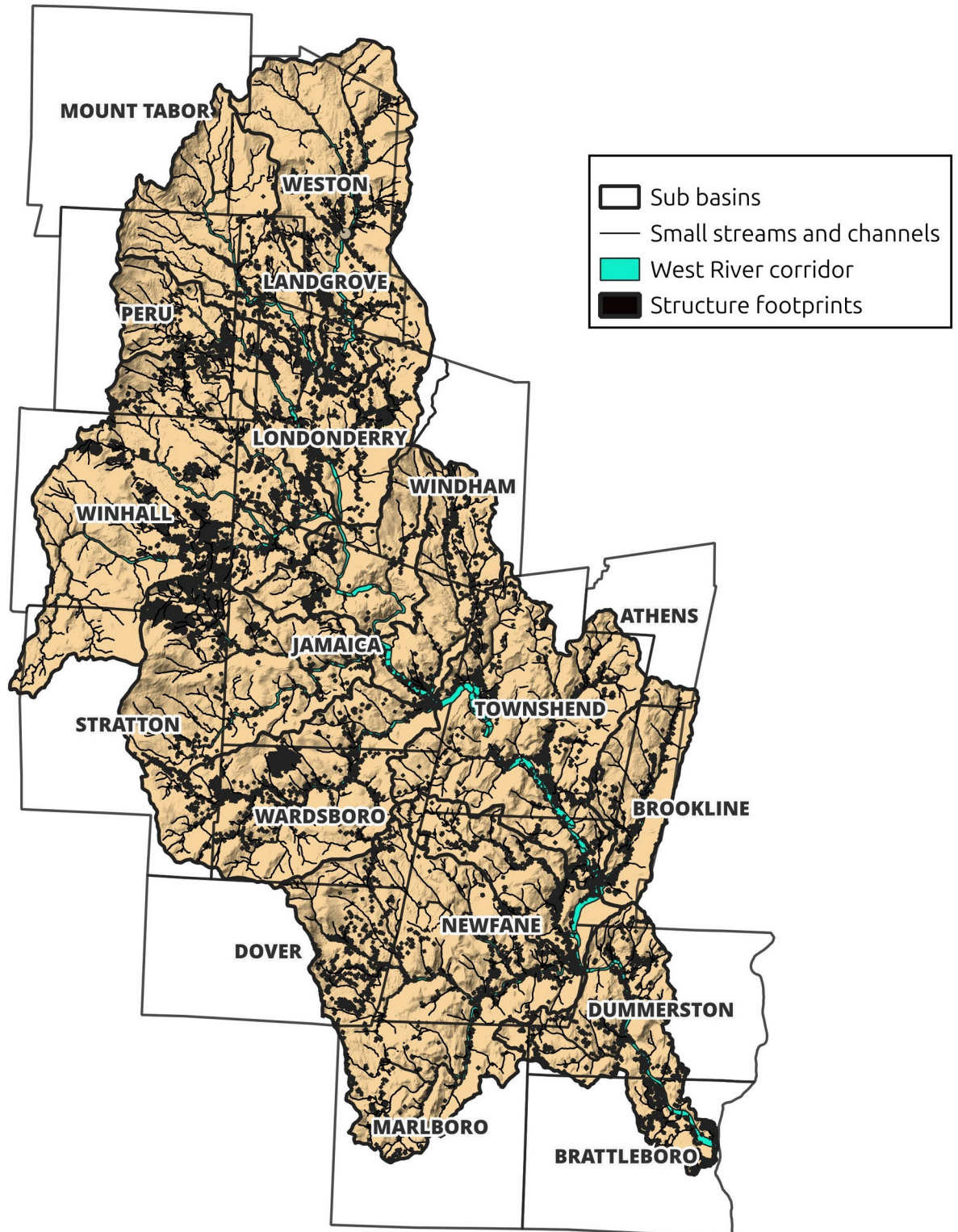
All sub basins drain into the river main stem and that empties into the Connecticut river near Brattleboro.

# West River Basin



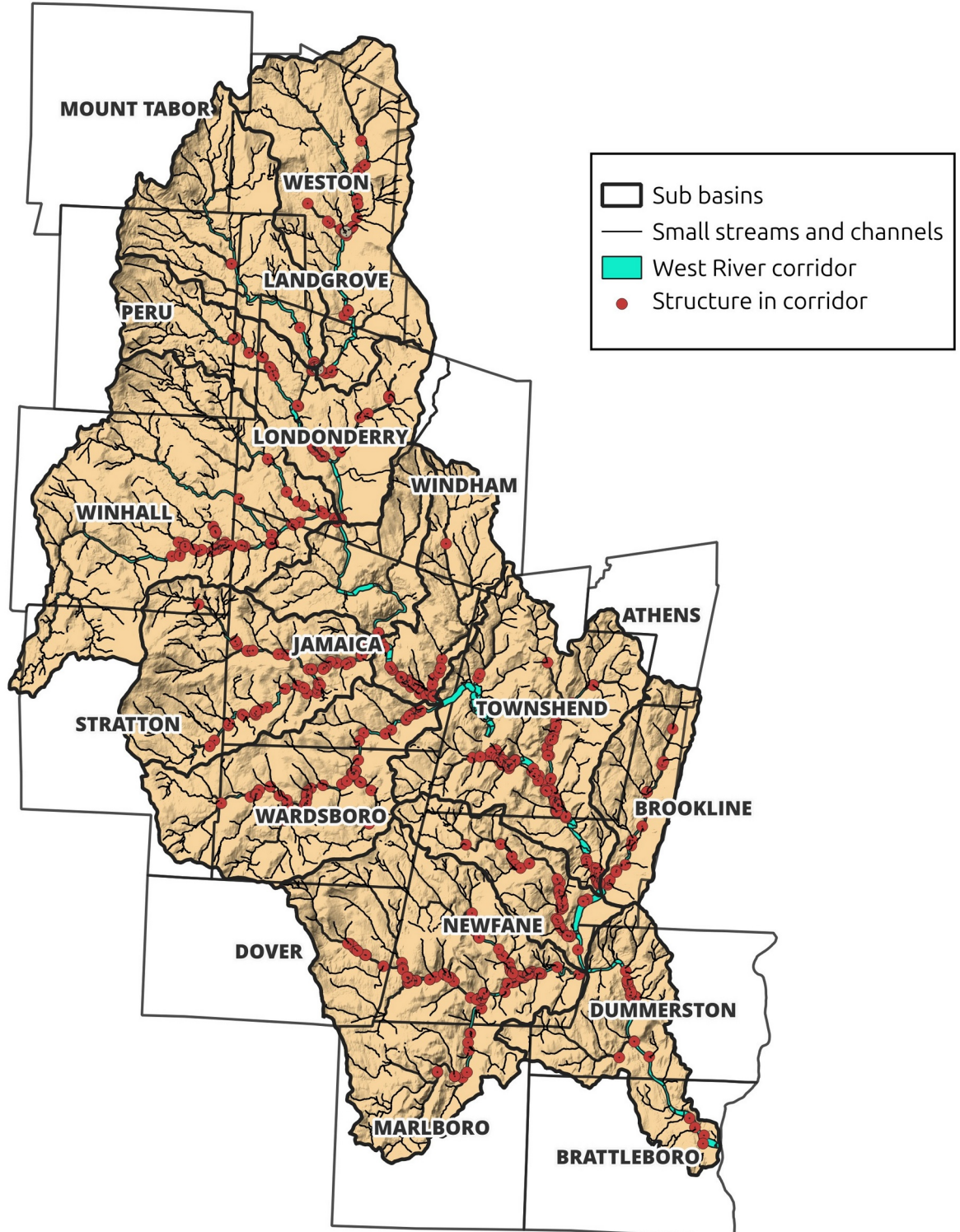
There's 18 town in the basin. All of these towns issue permits where required. It is not mandatory that a town take into consideration how exercising that permit may impinge upon another town in the basin.

# West River Basin



Each black dot is a structure footprint and the town boundaries give an idea of the settlement pattern and concentration

# West River Basin



The 731 red dots represent structures actually sitting the river corridor as currently drawn. We know the the river corridors are inaccurate and are to be updated but don't know by how much. As an experiment, I extended corridor by adding 50' each side and recounting the structures in the corridor. That added another 449 structures bringing the total within the corridor to 1180.